

*"SMA is critical to our daily operations. It has proven to be an extremely powerful tool and will continue to help us grow efficiently and effectively."*

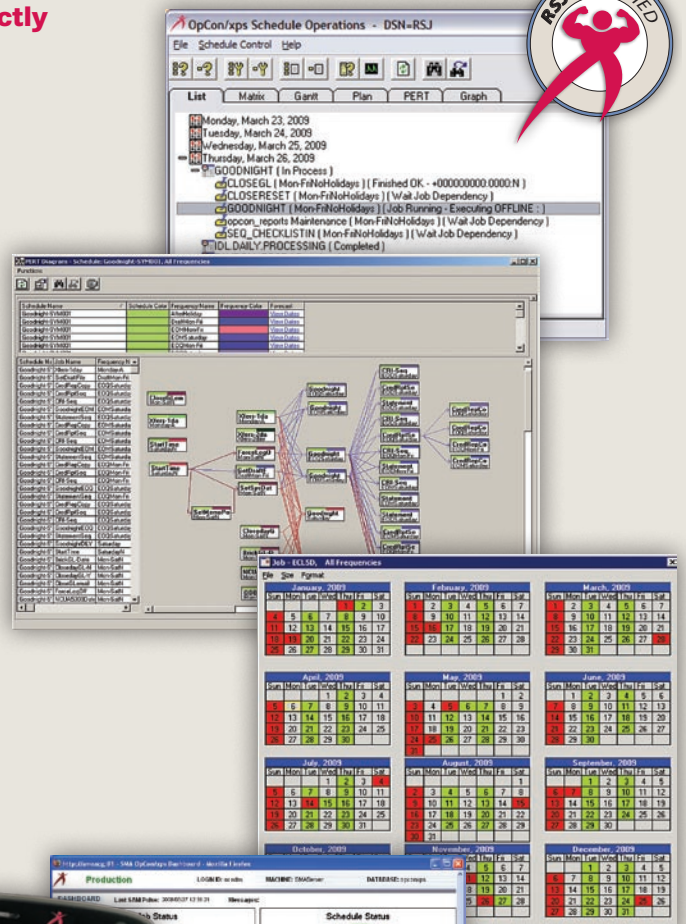
**Matt Kissinger** - Pennsylvania State Employees Credit Union  
Information Systems Manager

# The perfect tool for automating Episys® software

## New Symitar™ Interface Controls Episys® Jobs Directly

SMA collaborated with numerous customers to develop the dedicated Episys® interface that:

- Eliminates the need for Auto-Batch
- Improves overall application scheduling management
- Allows Restarts at the jobfile level (from the point of failure)
- Returns error definitions at the jobfile level
- Terminates jobs upon failure criteria
- Displays "Batch Output" from the OpCon/xps user interface
- Displays currently running jobfiles in real time
- Verifies processing, without logging into SYMS to see if a job ran correctly
- Eliminates batch queue bottlenecks
- Reduces manual intervention
- Automates complex jobfile prompts and date calculations such as previous business day, next business day and holidays
- Automates complex file management such as Goodnight, Payroll Posting, Card Processing, and ACH processing
- Provides complete audit trails



Email: [sma@smausa.com](mailto:sma@smausa.com)